

SIMPLY CLEVER

ŠKODA



PRESS RELEASE | JULY 2015

FABIA





Press Release, Page 2 of 37

New ŠKODA Fabia

Photographic Portfolio



Fabia Hatch_01



Fabia Hatch_02



Fabia Hatch_03



Fabia Hatch_04



Fabia Hatch_05



Fabia Hatch_06



Fabia Hatch_07



Fabia Hatch_08



Fabia Hatch_09



Fabia Hatch_10



Fabia Hatch_11



Fabia Hatch_12



Fabia Hatch_13



Fabia Hatch_14



Fabia Hatch_15



Fabia Hatch_16



Fabia Hatch_17



Fabia Hatch_18



Fabia Hatch_19



Fabia Hatch_20



Fabia Hatch_21



Fabia Hatch_22



Fabia Hatch_23



Fabia Hatch_24



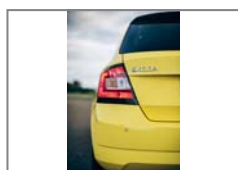
Fabia Hatch_25



Fabia Hatch_26



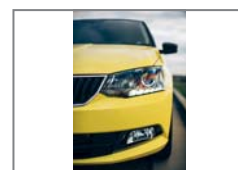
Fabia Hatch_27



Fabia Hatch_28



Fabia Hatch_29



Fabia Hatch_30





Press Release, Page 3 of 37

New ŠKODA Fabia

Photographic Portfolio



Fabia Hatch_31



Fabia Hatch_32



Fabia Hatch_33



Fabia Hatch_34



Fabia Hatch_35



Fabia Hatch_36



Fabia Hatch_37



Fabia Hatch_38



Fabia Hatch_39



Fabia Hatch_40



Fabia Hatch_41



Fabia Wagon_01



Fabia Wagon_02



Fabia Wagon_03



Fabia Wagon_04



Fabia Wagon_05



Fabia Wagon_06



Fabia Wagon_07



Fabia Wagon_08



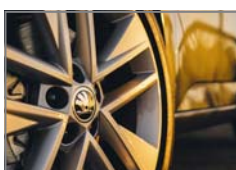
Fabia Wagon_09



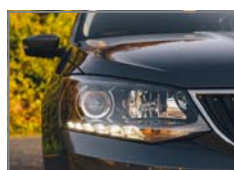
Fabia Wagon_10



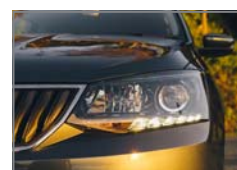
Fabia Wagon_11



Fabia Wagon_12



Fabia Wagon_13



Fabia Wagon_14



Fabia Wagon_15



Fabia Wagon_16



Fabia Wagon_17



Fabia Wagon_18



Fabia Wagon_19





Press Release, Page 4 of 37

New ŠKODA Fabia

Photographic Portfolio



Fabia Wagon_20



Fabia Wagon_21



Fabia Wagon_22



Fabia Wagon_23



Fabia Wagon_24



Fabia Wagon_25



Fabia Wagon_26



Fabia Wagon_27



Fabia Wagon_28



Fabia Wagon_29



Fabia Wagon_30



Fabia Wagon_31



Fabia Wagon_32



Fabia Wagon_33



Fabia Wagon_34



Fabia Wagon_35



Fabia Wagon_36



Fabia Wagon_37



Fabia Wagon_38



Fabia Wagon_39



Fabia Wagon_40



Fabia Wagon_41



Press Release, Page 5 of 37

Third generation ŠKODA Fabia lands in Australia

ŠKODA Australia introduces new Fabia hatch and wagon with a host of standard features, including Front Assist with City Emergency Brake and SmartLink™ smartphone connectivity including Apple CarPlay and Android Auto and rear parking sensors.

ŠKODA Australia is pleased to announce the arrival of the third generation of its vibrant city car, the Fabia, with two body shapes, a raft of new standard equipment, new efficient petrol engines, and a host of colour combinations and optional packages for customers to personalise their Fabia.

The Fabia range is available in Australia with two engine and transmission combinations – the 66TSI petrol engine paired with a five-speed manual transmission, or the higher output 81TSI petrol engine paired with a seven speed DSG transmission. Both combinations offer excellent fuel economy thanks to standard Green Tech – which features a start/stop system and brake energy recuperation – producing an impressive fuel economy figure of 4.8 litres per 100km in all specifications.

Available in either hatch or wagon specification, the Fabia is the next ŠKODA model to feature the new ŠKODA design language, as premiered in the new Octavia. As always, all the hallmarks of ŠKODA's 'Simply Clever' thinking is present in the new Fabia; and despite its size, it offers one of the best interior spaces in its class, dwarfing even the space offered by some larger SUVs with a staggering 1125 litres of storage space with the rear seats down for the hatch, and an even larger space of 1370 litres for the wagon.

Having already been named 'Best in Class' by Europe's NCAP crash testing program, for achieving the highest overall safety score in its class, the new Fabia arrives in Australia with an even higher level of safety equipment as standard specification, with the addition of Front Assist with City Emergency Braking function across the range.

The Front Assist with City Emergency Brake uses a radar sensor to continually measure the distance to the traffic ahead. Whenever the distance is too small, Front Assist intervenes – from warnings to automatic emergency stopping.

The radar sensor integrated into the car's front end permanently monitors distance to traffic ahead. As soon as this distance becomes insufficient, the Front Assistant intervenes at one of four levels to prevent a collision. The shorter the distance becomes, the stronger the intervention.



Press Release, Page 6 of 37

The new Fabia is also one of the first vehicles in its class to offer convenient connectivity with smartphones via the SmartLink™ system, also standard specification. As part of the Volkswagen Group's Modular Infotainment Matrix (MIB), the SmartLink™ function allows users to connect their mobile phone to the vehicle's display with the ability to use the mobile's apps and programs using the vehicle's interface. SmartLink™ integrates both Apple's Carplay and Android's Android Auto software for a seamless experience.

To further add personalisation for customers, the Fabia hatch is available in a number of Colour Concept packages which enhance the interior and exterior of the vehicle with a selection of alternating body, roof and wheel colours, ensuring that each Fabia can be as wild or sophisticated as customers would like.

In addition to the Colour Concept, the new Fabia is available with a number of optional packages which represent excellent value and further opportunities for customisation.

Optional packages

Travel Pack

Available for 66TSI manual models, the optional Travel Pack adds cruise control with speed limiter, 16-inch 'Rock' alloy wheels, Fatigue Detection and LED daytime running lights.

Sports Pack

Available for 81TSI DSG models, the optional Sports Pack adds 17-inch 'Clubber' alloy wheels, LED daytime running lights, front fog lights, Fatigue Detection and sports suspension.

Premium Sports Pack

Available as an option for 81TSI DSG models in combination with the Sports Pack, the optional Premium Sports Pack adds Light Assist (automatic light switching, coming home and leaving home functions), rain sensing wipers, privacy glass, a three-spoke flat-bottom steering wheel, advanced Keyless entry including smart key (KESSY) and alarm, Climatronic air conditioning and DAB+.

For further information:

Karl Gehling, General Manager, Communications
T +61 409 138 069

karl.gehling@volkswagen.com.au

Kurt McGuinness, Public Relations Manager
T +61 413 135 334

kurt.mcguinness@volkswagen.com.au

ŠKODA AUTO

- > is one of the longest-established vehicle production companies in the world. Since 1895, the Czech headquarters in Mladá Boleslav has seen the production firstly of bicycles and then, shortly afterwards motorbikes and cars.
- > currently has seven passenger car models: Citigo, Fabia, Roomster/Praktik, Rapid, Octavia, Yeti and Superb.
- > delivered 1.04 million vehicles to customers worldwide in 2014.
- > has belonged to Volkswagen since 1991. The VW Group is one of the most successful automotive groups in the world. ŠKODA, in association with the Group, independently manufactures and develops vehicles, as well as components, engines and gear transmissions.
- > operates at three locations in the Czech Republic, produces in China, Russia, Slovakia and India mainly through Group partnerships, as well as in Ukraine and Kazakhstan through local partners.
- > employs over 25,800 people globally and is active in more than 100 markets.



ŠKODA





Press Release, Page 8 of 37

New ŠKODA Fabia: simply more car

- > **Appealing:** crisp design, sporty proportions, fresh colours, and a range of distinctive wheel options
- > **Clever connections:** the first ŠKODA with SmartLink™ (Apple CarPlay and Android Auto)
- > **Practical:** compact outer dimensions, spacious interior for passengers and luggage; 305l boot capacity for the hatch and 505l for the wagon
- > **Technology:** MQB (Modularer Querbaukasten = Modular Transverse Matrix) assistance systems for improved safety and comfort
- > **Eco-friendly:** a new MQB EU6 engine range, more efficient with lowest CO₂ emissions
- > **Individuality:** new colour combinations and innovative interior concept
- > **Typically ŠKODA:** 17 practical 'Simply Clever' features, nine of them new
- > **Bestseller:** almost 3.5 million ŠKODA Fabias sold worldwide since 1999

Sydney, July 2015 – Love at first sight – with a car, it's the design that awakens emotions. The ŠKODA Fabia's third generation impresses with sporty proportions combined with a design language that is significantly sharper, more dynamic and full of emotion. ŠKODA now brings innovative safety, comfort and infotainment systems into the small car segment; systems that were previously reserved for higher car segments. Drivers can now pair the Fabia with a smartphone via SmartLink™ (Apple CarPlay and Android Auto) and despite more tech and spec, this new version is lighter and more efficient than the previous model. The Fabia weighs up to 1087 kg in the hatch and up to 1111 for wagon. In typical ŠKODA fashion, the car offers lots of space with outstanding boot capacity and optimum functionality with 17 'Simply Clever' features.

"The new ŠKODA Fabia is the ideal car for modern, urban mobility. It is compact and offers lots of space for passengers and their luggage, a modern crisp design and great efficiency and safety, bringing together all of ŠKODA's brand values," says ŠKODA CEO Prof. Dr. h.c. Winfried Vahland. "In designing the third generation, our aim was to bring innovative technology into the small car segment. Our focus was on the environment, fuel efficiency, safety and comfort. The third generation of the new ŠKODA Fabia will make a visual impact with its sportier and emotionally-rich design language. The fact that we are able to offer this vehicle at an affordable price proves the strength of our brand. We think this great car will write another chapter in the Fabia's success story and bring new customer groups to the brand," says Vahland.

The Fabia is the brand's second bestselling car after the ŠKODA Octavia. Since its debut in 1999, the Czech car maker has sold almost 3.5 million Fabias worldwide.



Press Release, Page 9 of 37

From the beginning, the ŠKODA Fabia has embodied all of ŠKODA's good qualities: lots of space within compact exterior dimensions, a vast array of convenient solutions, fuel efficiency, dependable technology and excellent value for money. All these factors have made the Fabia one of the most popular cars of its class.

The Fabia has consolidated its success by winning a plethora of renowned awards. The second-generation Fabia alone has won an impressive list of international honours since 2007 including the prestigious 'Red Dot Design Award'. In Germany, the honours included the 'Golden Steering Wheel' and 'Company Car of the Year'; it was also named 'Most Affordable Small Car' at the 'AutoTrophy' and best imported small car in the 'Best Cars' competition. In Great Britain, among others, the Fabia won 'Best Small Car below £16,000' at The Caravan Club and 'Small Car of the Year' at the Scottish Group of Motoring Writers.

Pure emotion: a crisp, sporty design

Balanced proportions, crystalline shapes, a distinctive interplay of light and shade, precise lines and sharp edges mark out the new generation of the ŠKODA Fabia, as it impressively demonstrates the brand's increased emotional charisma. The new ŠKODA Fabia is 8mm shorter, 90mm wider and 31mm lower than its predecessor, while the wagon is 10mm longer. The **front** appears more assured and imposing thanks to the added width and distinctive elements such as the razor-sharp, wide headlights, crystalline glass, a charismatic slatted grille and the brand's logo on the bonnet's 'nose'. The designers highlighted the graphic unity of the grille and the lights, precisely marking out all lines and edges such as in the two distinctive beadings running from the outside to the inside of the bonnet.

A crisp tornado line and the so-called wing line mark the **side** of the car and underscore the Fabia's dynamic appearance. Slim pillars, the contrast between light and dark shades as well as an all-new attractive range of wheels complement its distinctive appearance.

The **rear** of the Fabia exudes strength and assurance. It is clean and boldly contoured with an emphasis on horizontal lines. As with all ŠKODA vehicles, designers paid special attention to shaping the taillights, now with rich, dark and contrasting edging. In the style of the Czech glass-making tradition, every detail has been polished to achieve brilliant luminosity, while the taillights retain ŠKODA's typical C shape.

A first for ŠKODA is the scope for individual configuration of the Fabia both inside and out. For instance, customers can choose between four colours for the roof, the mirror housings and the wheels. The car's all-new **interior** impresses with quality, precise workmanship, a horizontal emphasis and a wide array of colours and colour combinations.



Press Release

, Page 10 of 37

First ŠKODA with SmartLink™ technology including Apple CarPlay and Android Auto

The infotainment systems in the new ŠKODA Fabia is an all-new concept based on Volkswagen's MIB (modular infotainment matrix) technology. It enables an array of attractive applications previously unavailable in a small car including a touch display with swipe operation.

The new ŠKODA Fabia is the first ŠKODA to offer the option of easy pairing with a smartphone thanks to so-called SmartLink™ smartphone connectivity, which enables display and operation of selected smartphone applications on the Bolero infotainment system's screen.

New benchmarks in efficiency and emissions: from 109g CO₂ per km.

Engineers have made great progress with the new ŠKODA Fabia in terms of fuel efficiency and emissions. Fuel consumption has been reduced to 4.8l/100km and CO₂ emissions of just 109g/km. These remarkable improvements are the combination of new petrol engines, weight reduction (down to as low as 1042kg and 1,066 for the wagon) and improved aerodynamics.

Both the Fabia engines comply with **EU6 emission standards** and come with Green Tech Start-Stop System and brake energy recuperation. The Fabia is available with a 66TSI engine paired with the 5-speed manual transmission or the 81TSI with 7-speed DSG.

Comfortable chassis

The new chassis of the ŠKODA Fabia was designed with added comfort and optimum ride stability in mind. Finely-adjusted interplay between the new electro-mechanical steering, the new engines and the redesigned engine mounting enabled designers to significantly improve the chassis setup. The model benefits from a wider track (30mm) both at the front and rear plus a wheelbase that is 5 millimetres longer. The vehicle design of the new Fabia is based on a modular concept, drawing on Volkswagen's MQB technology, e.g. engines, electro-mechanical steering and a large part of the electrics (electrical architecture, such as ECUs, instrument cluster, infotainment and assistance systems).

Despite added technology and comfort, designers succeeded in significantly reducing the vehicle's weight when compared to the previous generation Fabia.

Top-level safety: technology from higher vehicle classes

The new Fabia comes with cutting-edge safety systems that were previously reserved for higher vehicle classes. Standard equipment includes, **Front Assist** with integrated **City Emergency Brake Function** which automatically brings the vehicle to a complete stop and reduces the risk of rear-end collisions. The **Multi-Collision Brake System** will automatically slow the car down after an accident to prevent a follow-on collision.





Press Release, Page 11 of 37

Fatigue Detection will detect fatigue in the driver, while the new **Speedlimiter** (standard on 81TSI or available on the Fabia 66TSI with Cruise Control feature in Travel Pack) can prevent the car from exceeding a pre-set speed. **Hill Hold Control** will help drivers start on a gradient. The Fabia also comes with an **electronic tyre pressure monitor** as standard.

The new ŠKODA Fabia has the enhanced electronic differential lock function **XDL** as standard, which maximises traction when cornering.

Passive safety elements include up to **six airbags** finely adjusted for interaction with the car's three-point seatbelts.

Comfort is a priority

A first in the ŠKODA Fabia is **KESY (Keyless Entry Start and Exit System)**; the automatic locking and starting system. **Rear parking sensors** with optical parking display also feature as standard.

Making its debut in the ŠKODA Fabia is the new **C-EPS (Column-Electric Power Steering)**. Replacing the electro-hydraulic power steering used previously, it saves weight and fuel intuitively.

For the first time, customers can order the Fabia with a large **panoramic glass roof**.

Lots of space, 17 'Simply Clever' features

The new ŠKODA Fabia impresses with lots of space and even more functionality. The model has 17 'Simply Clever' features on offer.

No other small car offers as much boot space as the new ŠKODA Fabia. The hatch's boot has a capacity of 305 litres (1,150/1370 litres with the rear seats folded down), while the unique-to-segment wagon has an expansive 505 litres.

The passenger compartment is 21mm wider (in the front) and 8mm longer. Front-seat passengers enjoy more headroom even though the new Fabia is lower overall.

17 'Simply Clever' features make the new ŠKODA Fabia one of the most practical vehicles in its segment. These include: a multimedia cradle located in the cup holder at the front, a rubbish bin located in the door, storage nets on the inside edges of the front seats, bottle holders in the rear doors suitable for 0.5 litre bottles, and SmartLink™ technology. In addition, a dedicated space for a 1.0-litre bottle is now available in the glove compartment.

The car also features an array of other great details such as various holders, hooks and nets in the boot.

ŠKODA





Press Release, Page 13 of 37

The new ŠKODA Fabia: modern, dynamic and full of emotion

- > Exciting: new ŠKODA Fabia in a new, expressive design
- > Perfect proportions: ŠKODA Fabia now lower and wider
- > Character: sharp edges, distinctive play of light and shade, crystalline shapes
- > Innovative: fresh interior concept with attractive colour combinations
- > Maximum customisation: six body colours, six colour concepts
- > Revised wheel range with eight distinctive designs from 15 to 17 inches

The new ŠKODA Fabia impresses with a new appearance. The new design makes the small car much sportier, more distinctive and emotionally rich, and impresses with balanced proportions, crystalline shapes and crisp lines. The Fabia is a young and fresh small car, a vehicle with character – passionate, modern and with lots of scope for customisation. Even with all this, the ŠKODA Fabia remains true to its basic virtues, offering lots of space and being ‘Simply Clever’ down to the smallest detail.

“The design of the new ŠKODA Fabia represents the evolution of the ŠKODA design language,” says Dr Frank Welsch, ŠKODA Board Member for Technical Development. “For the first time, a ŠKODA vehicle incorporates design elements of the VisionC design study. With its sporty proportions, the ŠKODA Fabia is modern, crisp and fresh. We also transferred some of the genes from our rally cars to create the most emotionally-rich Fabia ever,” says Dr Welsch.

Clarity and precision combined with sharp edges, convex and concave surfaces, crystalline shapes, three-dimensional features and a distinctive interplay of light and shade – all of this makes the new ŠKODA Fabia a car with a character of its own. “The new ŠKODA Fabia is dynamic and full of character as never before,” says ŠKODA Head of Design Jozef Kabaň. New smooth proportions provide the ŠKODA Fabia with an impressive appearance. The new car is 8mm shorter, 90mm wider and 31mm lower, while the wagon adds an extra 10mm. In addition, the new model features an all-new interior concept with attractive colour combinations and lots of scope for customisation.

The front

From the **front**, the ŠKODA Fabia appears more imposing than ever before by embodying the core elements of the new ŠKODA design language, including the grille’s clear geometric shape, the ŠKODA logo on the sloping front end of the bonnet (‘nose’) and the crystalline design of the headlights. The silver logo, mounted at a vantage point on the nose, is the starting point for a distinctive overall design with a horizontal emphasis.

The ŠKODA Fabia refines these elements by giving them a characteristic edge. The result is an eye-catching appearance with its assured stance on the road. Improving on the last Fabia, the grille and the headlights fuse into a single optical unit. The grille with its distinct vertical bars is now elegantly differentiated by a chrome outline.



Press Release, Page 14 of 37

Distinctive and wide headlights with dark underlays hug the grille, strengthening the integration and creating an intriguing contrast to the lighter areas at the front. These surfaces have been intentionally separated by clean lines, their edges clearly accentuated, influencing the interplay of light and shade in the car's front appearance.

Two lines with a strong character contour the bonnet's edges, its outer swage lines now running slightly inward from the A-pillars to the transition between headlights and grille. This trajectory yet again emphasises the logo's central position, at the same time enhancing the car's optical width. The first time ŠKODA showed this design feature was in the 'ŠKODA VisionC' study.

The wide, clean-cut headlights boast distinctive contours and sharp edges with a crystalline finish; paying homage to the Czech glass-making tradition. For the first time, customers can opt for LED daytime running lights integrated into the headlights.

The width is also emphasised in the lower part of the car's front. The distinctive air inlet features horizontal black synthetic bar trims. Wide fog lamps are available as an option in the Sports Packs while the front bumper is colour-coded.

The sides

The side view is clear, dynamic and more precise than ever before. A 31mm reduction in height, a roof which slightly slopes off at the rear, the precise tracing of all of the lines, the slender pillars and an attractive, fully revised range of wheels all enhance the Fabia's dramatic silhouette.

At 3,992mm, the new Fabia is slightly shorter than the second-generation ŠKODA Fabia (4,000mm). The front overhang is 847mm, 13mm less than in its predecessor. The ŠKODA Fabia's rear overhang is almost unchanged (676mm; previously 675mm).

The new Fabia wagon is 10mm longer than its predecessor and 90mm wider.

The car's high, sharply drawn **tornado line** stretches along the vehicle and creates a contrast-rich interplay of light and shade on the side of the car. With the **wing line**, which runs in a slight wave just below the tornado line, the designers created additional dynamism in the side flow. Starting at the headlights, the wing line stretches from the front to the rear wings, creating yet more light-and-shade surfaces and adding contrast to the side sections.

Starting at the front bumper, the dynamically designed **direct light surface** adds colour to the car's lower side.

The clear **outline of the side windows** is defined by straight lines and forms a self-contained unit. The B-pillars are gloss black, while the Fabia includes the 'fin' characteristic of new ŠKODA models with the window line in the rear doors dynamically drawn from bottom to top.



Press Release, Page 15 of 37

The roof of the ŠKODA Fabia slopes gently rearward, while the rear window features less slant. Both details contribute towards a more dynamic appearance. The wheel arches have bold contours, with the wings emphasised. The doors also sport newly designed bracket-shaped handles.

Providing an elegant transition between the roof and the tailgate, the new ŠKODA Fabia comes with a roof edge spoiler as standard.

Developers and designers achieved an impressive result in marrying the new dynamic appearance with ŠKODA's typical spaciousness and interior functionality. Boot volume in the hatch has increased by 5 litres to 305 litres. Interior length also increased slightly (plus 8mm) as did the width (plus 21mm front, plus 2mm rear). The wagons luggage space has increased by a notable 25 litres to 505 litres while offering a huge 1370 litres space with the rear seats down.

The rear

Even from the rear, the ŠKODA Fabia exudes new strength and assurance. The surfaces below the tailgate's edge have a distinctive inward (negative) slant, enhancing the **contrast between light and dark shades** and adding optical width – an effect emphasised by the clean disposition of the individual elements and the clear, horizontal arrangement of the rear.

The **tail lights** have assumed a unique design, as designers let themselves be inspired yet again by Czech glass-making tradition. The C-shaped tail lights frame the encompassing indicator and reverse lights, which stands out with its clean crystalline finish. The tail lights' distinctive C shape is accentuated by a black perimeter strip.

The arrangement of the brand name, logo and the model name achieves a perfect balance. The new Fabia features characteristic ŠKODA styling including: two clean-cut triangles at the rear of the vehicle visually connect together the tail lights and the tailgate and for increased practicality, the car's loading sill is low: just 659mm.

Individual diversity

The new ŠKODA Fabia offers new scope for **personalisation**. "Our customers want cars that are emotionally appealing, cars that they can configure and equip to their individual preferences. This is the kind of choice we are making possible with the new ŠKODA Fabia," says Jozef Kabaň.

Six **body colours** are available, including the metallic colours Race Blue, Magic Black, Quartz Grey and Moon White. Available standard colours (non-metallic) are Candy White and Corrida Red. Two additional colours are available when Fabia with colour concept is selected; Sprint Yellow and Rally Green Metallic.





Press Release, Page 16 of 37

A special highlight is the Colour Concept option allowing drivers to choose an individual **roof colour**. Customers can order the roof – including the A-pillars – in silver, white, black or red. If a customer chooses this option, the mirror housings and wheel rims will be colour-coded; this option features 16-inch alloy wheels.

All-new interior concept: a new level of diversity – clear, precise, versatile

The ŠKODA Fabia's completely revised interior shines with quality, precision, top workmanship and a wide array of colours and colour combinations. Compared with its predecessor, the new concept is virtually a brand new design. An array of options in both colour and equipment provide customers with more choice than ever before when customising the car's interior to suit their personal preferences.

At the same time, the second-generation ŠKODA Fabia's already impressive space has improved in several respects.

The interior is tidy and features high precision with great attention to detail. All controls are in the right place for intuitive operation. Interior designers placed a distinct emphasis on horizontal lines, making the cabin appear extremely spacious and self-assured.

The instrument cluster now has a new look; all gauges are easy to read. All controls, levers and switches have been redesigned, as have the door handles.

The elegant centre console is more slender than before and is now visually separate from the dashboard, making it appear lighter.

The Bolero infotainment system sits in the middle of the centre console. The Bolero comes with SmartLink™ with Apple CarPlay and Android Auto where the contents and functions of a smartphone can be displayed and controlled on the screen of the infotainment system. This technology is a standard feature in the new Fabia.

The dashboard in the new ŠKODA Fabia has a more dynamic look, an effect which the designers achieved by, among other things, positioning the central air inlets higher up and providing the upper part of the dashboard with more distinctive contours.

The new ŠKODA Fabia comes with all-new three-spoke multi-function leather steering wheels adjustable in height and reach.





Press Release, Page 18 of 37

Clever small car that's big on the inside

- > New ŠKODA Fabia: compact on the outside, big on the inside
- > Perfect companion for everyday life: reliable, spacious, practical and agile
- > Outstanding boot space: 305 litres and 505 litres for the wagon
- > 'Simply Clever': 17 features for more convenience

The new ŠKODA Fabia is more practical and cleverer than ever before. The new model offers space for five occupants and their luggage, but thanks to its compact outer dimensions, it is still extremely agile and nimble, making the Fabia the ideal car for urban traffic. Its boot is the largest in the small car segment. In addition, the third- generation Fabia comes with 17 'Simply Clever' features, up to nine of them new.

"The new ŠKODA Fabia is a real champion in terms of practicality and offer a wide variety of opportunities for use and the largest boot capacity in its class – it is the ideal car for modern and convenient mobility in the city and the perfect combination of emotion and functionality," says Dr Frank Welsch, ŠKODA Board Member for Technical Development.

Generous space

The ŠKODA Fabia offers lots of room for occupants and their luggage. The interior is slightly longer and wider than before and, while front-seat occupants now have more headroom. The car's boot is the largest in its segment. Nevertheless, the new ŠKODA Fabia is an agile and nimble small car thanks to its compact outer dimensions.

Although the new ŠKODA Fabia is 8mm shorter than its predecessor, its **interior length** was increased by 8mm to its current length of 1,674mm. Elbow room is also greater at 1,401mm (plus 21mm) at the front and 1,386mm (plus 2mm) at the rear.

Boot capacity is top in its segment. The new ŠKODA Fabia will hold 305 litres of luggage and 505 litres for the wagon, 5 litres more than the previous model and 25 litres more for the wagon: significantly more than competitor models. With the back seats folded down, loading capacity increases to a maximum of 1,125 litres and 1,370 for the hatch and wagon respectively.

A spacious rear access width of 1,098mm (1,028mm for wagon), a tailgate that swings open to 1,915mm (1,900 wagon) and a low sill height make loading easier. The loading area is 960mm wide, which is 2mm wider than the previous generation.



Press Release, Page 19 of 37

Good thinking – 17 'Simply Clever' features, nine of them new

For ŠKODA, 'Simply Clever' is much more than just a part of the brand's slogan. ŠKODA engineers work on smart solutions from the very beginning of a car's development. All ŠKODAs possess a range of clever features that make life easier for drivers and passengers.

The new ŠKODA Fabia perfectly lives up to this claim. Whether it is the pairing of smartphone and infotainment system, mesh net alignment or lots of holders and storage areas, the third generation of the ŠKODA Fabia is more functional and practical than ever before.

Depending on spec and customer preference, up to **nine new 'Simply Clever' features** can be found in the new ŠKODA Fabia.

SmartLink™ technology including Apple CarPlay and Android Auto brings smartphone apps including navigation to the infotainment system's display.

A mobile phone, smartphone or an iPod can be stored in the new **multimedia device cradle** in the cup holder on the centre console. The driver will also find a convenient **storage compartment** in the driver's door.

A **rubbish bin** is available for the side door. **Storage nets on the inside edges of the front seats** will hold miscellaneous small items.

The new ŠKODA Fabia provides more **room for drinks bottles**, now offering space for up to seven bottles: one 1.5-litre bottle in each of the front doors, one 0.5-litre bottle in both rear doors, one 0.5-litre and one 0.4-litre bottle in the centre console and one 1.0-litre bottle in the glove compartment. New for the ŠKODA Fabia is room for the drinks **bottles in the rear doors** and in the **glove compartment**.

The new ŠKODA Fabia also carries over the 'Simply Clever' features that proved themselves valuable in the car's second generation.

The standard **parking ticket holder** on the inside of the left-hand A-pillar lets the driver slip in a ticket for easy display.

In the Fabia, the standard **net restraint system** comprises of two storage nets to keep the boot space tidy while two bag hooks can also be found in the boot. The **parcel shelf** can be left in its normal position, but can also serve as a **horizontal** partition or be stored **vertically** behind the rear seats. In addition, a **flexible storage compartment** for the boot will hold miscellaneous objects in place.





Press Release, Page 21 of 37

Small car, big on technology: perfectly connected

- > First ŠKODA with SmartLink™: use of modern MIB technology allows pairing of car and smartphone
- > All-new infotainment systems now available in the new ŠKODA Fabia

The new ŠKODA Fabia is big on innovative and inspiring technology. Based on state-of-the-art Volkswagen Group MIB technology, the small car features all-new infotainment systems. The new ŠKODA Fabia is also the first ŠKODA to feature SmartLink™ functionality for pairing smartphones.

This innovative technology is based on the second generation of Volkswagen Group's MIB, the Modular Infotainment Matrix (Modularer Infotainment-Baukasten). The new Fabia offers DAB digital radio (optional in Premium Sports Pack), zoom and swipe smartphone-style operation, Bluetooth connection for phones, and the highlights: the display of smartphone content via SmartLink™.

A USB slot and an aux-in jack for connections to devices such as MP3 players are available as standard. An SD card slot is also available. A total of six speakers ensure a balanced sound.

Three buttons on either side of the display control the radio, media, phone, setup, sound and car menus, the latter is for specific car settings and display of additional information. Front Assist, rear parking sensors with optical parking display, the on-board computer, lights, windscreen wipers and the tyre pressure monitor (TPM).

The **Bolero infotainment system** with a 6.5-inch TFT colour display and a touchscreen, offers an impressive resolution of 800 x 480 pixels. The system includes an FM/AM radio including RDS, image viewer and Bluetooth convenient telephone capability. With SmartLink™, smartphone applications can be displayed on the touchscreen including on-screen display of sms text messages, allowing the driver to connect his/her smartphone to the car on all levels.

Four speakers in the front of the vehicle and two additional rear speakers as well as the impressive Arkamys Surround Sound system with virtual sound enhancement provides optimum listening enjoyment.

SmartLink™ turns the new ŠKODA Fabia into a smartphone on wheels

The new ŠKODA Fabia is the first ŠKODA ever to use MIB technology; its Bolero system offers an elegant connection between car and smartphone. This is possible thanks to SmartLink™ technology.



Press Release, Page 22 of 37

SmartLink™ on the Bolero infotainment system will allow compatible smartphones to display and control applications on-screen. This adds a new dimension, for instance, to the use of navigation software or to the enjoyment of personal music. Connecting is quick and easy: plugging a USB cable into the smartphone and the Bolero system and activating SmartLink™ mode on the radio is all it takes for the phone's SmartLink™-certified applications (apps) to be mirrored on the infotainment system's screen.

Whether you select and listen to music on your smartphone, get turn-by-turn directions or browse your contacts, all of this is mirrored on the infotainment system's screen.

ŠKODA Surround sound system

Available for the first time in the ŠKODA Fabia is the **ŠKODA Surround Sound System** which is standard in Bolero.

The system applies Digital Sound Processing with no latency or loss in quality.

Its software creates two additional virtual loudspeakers and improved sound quality. It also simulates a virtual subwoofer for lower bass frequencies. The result is a **brilliant three-dimensional sound** via six loudspeakers (four front, two rear).

ŠKODA





Press Release, Page 24 of 37

ŠKODA Fabia with all-new engine range

- > MQB technology: new EU6-compliant engines; Start-Stop System and brake energy recuperation as standard
- > Up to 21 per cent more economical

The third-generation ŠKODA Fabia sets new standards in terms of fuel consumption, emissions and weight, and is kind to both the environment and the wallet. Fuel consumption and CO₂ emissions have been reduced by up to 21 per cent compared to its predecessor. The all-new petrol engines comply with EU6 emission standards. In conclusion: the new ŠKODA Fabia is the most agile, environmentally friendly, economical and lightest Fabia ever.

"The new ŠKODA Fabia is a modern car made in Mladá Boleslav," says Dr Frank Welsch, ŠKODA Board Member for Technical Development. "Our foremost aim in designing new ŠKODA models is to substantially reduce the cars' fuel consumption, emissions and weight. I believe our engineers have risen to this challenge in the new ŠKODA Fabia by using innovative MQB technology. Our small car has never been as environmentally friendly and economical as this new Fabia generation," says Dr Welsch.

Both engines comply with the new EU6 emission standards and have both Start-Stop System and brake energy recuperation as standard. The gearboxes are manual (66TSI) or automatic DSG dual-clutch (81TSI).

Both petrol engines consume just 4.8l/100km.

Two new petrol engines from 66kW up to 81kW

Both the 66TSI and 81TSI engines in the Fabia are from the EA 211 series, based on MQB technology. The four-cylinders are 1.2 litre turbo-charged TSIs. Both petrol engines have four-valve technology and belt-driven camshafts. The power range begins at 66kW and goes up to 81kW.

The completely newly developed direct-injection **1.2 TSI/66kW** comes with a manual 5-speed gearbox, which delivers maximum power between 4,400rpm and 5,400rpm. The combined consumption of this four-cylinder engine is 4.8l/100km, with CO₂ emissions of 107g/km. Maximum torque is 160Nm at 1,400 to 3,500rpm.

The most powerful petrol engine in the new ŠKODA Fabia is the **1.2 TSI/81kW**. Maximum power is between 4,600rpm and 5,600rpm. This engine is combined with an automatic DSG seven-speed transmission. Maximum torque is 175Nm, achieved between 1,400 and 4,000rpm.



Press Release, Page 25 of 37

Engineering highlights in the EA 211 engine

Compared with the engines used previously, the **petrol engines** in the new ŠKODA Fabia are significantly more efficient and also lighter.

The design of the TSI engines is more compact than in their EA 111 predecessors with installation dimensions 50mm narrower, allowing more space for the interior. The position of the engine in the car has also been standardised. The engines are now positioned with their exhaust side backward and tilted at an angle of twelve degrees for a more efficient fit.

The new 1.2 TSI engines have, amongst other things, a completely new cylinder head with 16-valve technology as well as a variable intake valve control system and a drive belt for the valve gear. The system works with an injection pressure of up to 200 bar; the previous generation engines were working with a maximum pressure of 125 bar.

The EA 211 TSI petrol engine features a modern double-circuit cooling system, where the basic engine is cooled by a high-temperature circuit with a mechanically driven coolant pump. At the same time, a low-temperature circuit flows through the intercooler and turbocharger housing. The cylinder-head circuit is heating the car's interior. The exhaust manifold is integrated in the cylinder head. As a result, the engine will warm up to optimum temperature faster and provide sufficient warmth for heating the passenger compartment. The coolant lowers the exhaust gas temperature in the cylinder-head, reducing fuel consumption especially at high engine speeds.

Up to 112kg loss – 66TSI hatch weighs in at 1042kg kerb weight

The new ŠKODA Fabia is a lot slimmer, now weighing 1042kg at its leanest. This makes the new generation up to 112kg lighter than the previous model (depending on configuration).

Additional weight reductions have resulted from adjustments to the car's **body structure**. Using high-tensile steels in the body has increased static torsional stiffness whilst reducing weight.

New chassis for improved driving comfort

The car's new rigid body improves the ride, as does the **new chassis**. A 30mm wider track at the front and rear compared to its predecessor, and a lower body have made the new ŠKODA Fabia more agile and sporty. The wheelbase is 5 mm longer than in the previous Fabia.

The new Fabia's construction makes comprehensive use of elements from Volkswagen Group's MQB technology, e.g. engines, electro-mechanical steering and a large portion of the electrics (including electrical architecture, such as ECUs, instrument cluster, infotainment and assistance systems). The chassis was specifically optimised to work with the new engines, the new steering and the widened track.



Press Release, Page 26 of 37

The new Fabia's front axle is a MacPherson strut with triangular wishbones. The complete front axle construction was specifically improved in regards to handling and driving comfort as well as increased safety and more steering precision. Driving stability has been particularly improved through widening the track by 30mm. Slightly moving the front wheels forward by 5mm facilitated lengthening the wheelbase.

The car's rear axle is a torsion beam crank design. New trailing links increased track at the rear by 30mm, which has positive effects on ride stability. The suspension was also optimised for a more comfortable ride.

A new feature in the ŠKODA Fabia is **electro-mechanical power steering** or **C-EPS** (Column-Electric Power Steering), replacing electro-hydraulic power steering. Instead of hydraulics, C-EPS uses a programme-controlled electric servo motor on the steering column to aid a driver's steering actions. The hydraulic unit used previously, including servo pump and hydraulic fuel lines, has gone. The new design not only reacts faster and uses less space, it also means a weight reduction of 2.5kg and lower fuel consumption. Another advantage: thanks to the more direct, sportier steering, the driver needs less steering input whilst improving steering precision. The number of steering wheel turns from lock to lock is only 2.6, opposed to 2.9 turns compared to the second-generation Fabia. This corresponds to figures of the current Fabia RS.

The third-generation ŠKODA Fabia comes with an electronic differential lock (EDL) and its **XDL** enhancement as standard. In the second-generation Fabia, only the RS variant featured the XDL function. The EDL and XDL are driving dynamics functions integrated into the Electronic Stability Control (ESC).

EDL and XDL are active on the front axle. XDL ensures neutral vehicle behaviour in corners even with a dynamic driving style. Overall, the intended use of the technology feature widens. At lower cornering speeds, it will be activated at a lateral acceleration of just 0.15G. In the second-generation Fabia RS, 0.6G was required. When the system is active, gradual deceleration of the inner wheel increases torque to the outer wheel. In corners, the inner wheel is not just slowed down when accelerating, but also when braking or decelerating. The resulting yaw momentum supports the steering, enabling a safe yet fast passage through corners. XDL's impact increases with the speed of the vehicle in a corner.

ŠKODA





Press Release, Page 28 of 37

Small car, big technology: top-level safety

- > MQB technology: new ŠKODA Fabia comes with safety systems from higher segments
- > Innovative: ESC with Multi-Collision Brake System, Front Assist with City Emergency Brake, all standard
- > New chassis with wider track, XDL standard
- > Passive safety elements: six airbags as standard

Thanks to the use of modern MQB (Modularer Querbaukasten, i.e. Modular Transverse Matrix) technology, the new ŠKODA Fabia comes with safety innovations that were previously reserved for higher car segments. A new chassis with a wider track also enables performance with unrivalled active driving safety. Multi-Collision Brake, up to six airbags and a perfectly-tuned safety package protect occupants in an accident.

"In designing the new ŠKODA Fabia, we wanted to bring top-level safety into the small car segment, and were able to use Volkswagen Group's MQB modules and technology. As a result, the new ŠKODA Fabia features innovative assistance systems that in the past were more likely to be seen in higher car classes. This provides the Fabia with a level of safety previously unheard of in this segment and which no small car outside Volkswagen Group can offer," says Dr Frank Welsch, ŠKODA Board Member for Technical Development.

Modern assistance systems: innovation for all

Front Assist with integrated City Emergency Brake Function is making its debut in the new ŠKODA Fabia and is now a standard feature. A radar sensor integrated into the car's front end permanently monitors distance to traffic ahead. As soon as this distance becomes insufficient, the Front Assist intervenes at one of four levels to prevent a collision. The shorter the distance becomes, the stronger the intervention.

Level one is an optical warning. Level two consists of an optical and an acoustic warning of an approaching obstacle, and a conditioning of the brakes. At the third level, a braking impulse provides added warning as automated partial braking sets in. Eventually, level four as the highest 'escalation step' switches the brake assistant to maximum response and triggers emergency braking if the driver does not react.

An integral element of the Front Assist is the **City Emergency Brake Function**. This system activates itself at speeds between 5 and 30km/h. In case of an impending collision with a car or obstacle ahead, and in case of the driver not responding, the City Emergency Brake Function will intervene with automatic emergency braking.



Press Release, Page 29 of 37

The third generation of the ŠKODA Fabia is the first to be fitted with a **Multi-Collision Brake System**, which reduces the risk of the vehicle becoming involved in a subsequent collision following an accident. The system automatically actuates the brakes if it detects a primary collision even if the driver does not brake. This prevents a follow-on collision or at least reduces the speed at which this collision occurs. When the Multi-Collision Brake is activated, it automatically switches on brake lights and hazard lights. Automatic braking is available down to a remaining speed of 10km/h. The driver can override the system at any time by accelerating or initiating emergency braking him-/herself.

The Multi-Collision Brake system is a feature of ESC (Electronic Stability Control), which is now standard in the ŠKODA Fabia. ESC will activate in critical driving situations and purposely prevent the car from swerving in corners.

Fatigue Detection warns the driver of impending fatigue, available for the first time in the ŠKODA Fabia and available in the optional Packages. The system will detect deviations from normal driving behaviour indicating diminishing concentration in the driver. 15 minutes after the engine has been started, the Fatigue Detection will begin to analyse steering behaviour and store the results as long as driving speed is above 65km/h. If the system detects a marked deviation from characteristic steering behaviour, it will sound a warning signal in the instrument cluster coupled with an optical message: "Fatigue detected – please take a break". If the driver does not stop for a pause within the next 15 minutes, the system will repeat the warning.

Another feature debuting in the ŠKODA Fabia is the **Speedlimiter**. If the Speedlimiter is activated, the car will not exceed the preset speed. The limiter is activated via a lever mounted on the left side of the steering column. For safety reasons, a kick-down will deactivate the Speedlimiter. This feature is available in conjunction with Cruise Control as a part of the optional Travel Pack on the 66TSI and standard on the 81TSI.

Hill Hold Control (HHC) assists drivers to start on an incline. The system becomes active from a gradient of five per cent and permits a comfortable start uphill even without using the handbrake as HHC prevents the car from rolling backwards.

The ŠKODA Fabia is fitted with an **electronic tyre pressure monitor** as standard, informing the driver, should tyre pressure drop.

The new ŠKODA Fabia is available with **LED daytime running lights** as an optional extra in the Travel Pack and Sports Pack, which significantly improves the car's visibility by day.

New chassis, wider track and XDL for maximum driving stability

The new ŠKODA Fabia features a modified chassis. A wider **MacPherson front strut** with triangular wishbones and a torsion stabiliser provides maximum driving stability. At the rear, the new ŠKODA Fabia uses an improved, widened **twist beam axle**.



Press Release, Page 30 of 37

For the first time, the third-generation ŠKODA Fabia comes standard with the enhanced electronic differential lock function **XDL**, which is integrated into the ESC (Electronic Stability Control). XDL ensures neutral vehicle behaviour in corners even with a dynamic driving style, both on acceleration and braking. At lower cornering speeds, it will be activated at a lateral acceleration of just 0.15G. The system's electronics will activate the brake on the inside wheel in a corner, therefore increasing drive momentum on the outside wheel. The resulting yaw momentum induces controlled oversteer, ensuring both quick and safe passage through corners. The system's impact increases as the car is driven faster around a corner.

The ESC system comes with a prefill function, which increases pressure in the brake lines when the brake pedal is abruptly released, thus better preparing the braking system for a possible emergency stop.

Contributing hugely to the on-road stability of the ŠKODA Fabia is its **wider track** and lower body. Compared with its predecessor, track is 30mm wider.

Improved passive safety

Should an accident occur despite all of the safety systems included in the car, occupants of the new ŠKODA Fabia will be shielded by a comprehensive and finely-tuned passive safety package.

Passive safety is based on body stiffness and the arrangement of the body's crumple zone. The new Fabia's body is lighter and stiffer than its predecessor's. The proportion of hot-formed body steel has been increased by 29 per cent. Hot-formed steels are up to six times stronger than common deep-drawing steels and up to four times stronger than conventional high-strength steels. Advantage: lighter components can be manufactured that will still meet high crash requirements. Hot-formed steels are particularly used for the A-pillar and B-pillar areas. In addition, the share of high-tensile and ultra-high-tensile steels has almost doubled in the new Fabia.

Up to six **airbags** work in conjunction with five three-point seatbelts to protect occupants in a collision. Two head airbags are designed to inflate from inside the car's roof lining to cover the entire side window area. Two side airbags in the front help prevent injuries to the pelvis and chest areas. In a head-on collision, driver and front-seat passenger airbags inflate to protect the driver and front passenger.

Three-point safety belts on all five seats restrain occupants in an accident. The front belts are adjustable in height and fitted with tensioners, which will tighten the fastened belts within fractions of a second, while belt force limiters prevent excessive strain on occupants' chests. If front-seat occupants' belts are not fastened, a warning signal will sound. If rear-seat occupants do not buckle up, an optical message will display in the instrument cluster. Isofix for baby and child car seats are available, as are TopTether anchors on the two outer rear seats.



Press Release, Page 31 of 37

In an emergency, the new ŠKODA Fabia's brake lights will switch on automatically. If the driver makes an emergency stop from a speed of over 60km/h, the brake lights will flash to warn traffic behind. If speed is less than 10km/h after an emergency stop and the brake pedal remains pressed, the hazard lights will switch on automatically.

Inflating the airbags will automatically cut off the engine's fuel and electricity supply, reducing the risk of fire. The central locking system will open all door locks and the interior lighting will switch on automatically.



ŠKODA





Press Release, Page 33 of 37

Small car, big on technology: more comfort than ever before

- > Invaluable: cutting-edge MQB assistance systems for safety and comfort
- > Well-tempered: new air conditioning for the new ŠKODA Fabia

Travelling in the new ŠKODA Fabia is more comfortable than ever before. Based on modern MQB technology, numerous new comfort features have found their way into the small car – features that were previously distinguishing higher-segment vehicles if anything. An array of new comfort assistance systems is available for the first time in the ŠKODA Fabia. In addition, the car's new chassis and its wider track provide a significant increase in riding comfort.

The automatic locking and starting system, is new to the ŠKODA Fabia, allowing the driver to open and close the car without keys in hand. The KESSY control unit will recognise the car's key within a 1.5 metre radius. When the driver touches the handle on the door or the boot, the car automatically unlocks. The engine will start at the push of a button. To lock the car, you only have to touch a sensor on the driver's door handle.

Rear parking sensors are available for the first time as standard in the ŠKODA Fabia. The system assists a driver when parking, the audible signals warn of insufficient distance to an obstacle or another car. The closer the obstacle, the higher the frequency of the signal. When the distance is less than 30cm, a continuous signal will sound. A Fabia will also have visual signals.

The optional **rain sensor** feature will automatically switch the wipers on and off and regulates wiping frequency depending on rain intensity. Sensitivity can be controlled manually via a switch. The **light sensor** automatically switches on the low beam when surrounding light drops below certain thresholds, such as at dusk or on entering a tunnel. Light Assist has 'Tunnel Light', 'Coming Home' and 'Leaving Home' functions, which enhance active safety and provide added convenience.

The new **panoramic glass roof** for pleasant ambient lighting in the car comes as an option. With its size of 1,576mm × 1,090mm and transparent area of 1,072mm × 760mm, the glass roof lets plenty of light into the car and provides an unobstructed view of the sky for passengers.

More comfort with the new-generation air conditioning

The new Fabia features the newest-generation air conditioning with an MQB-based control unit. Both manual air conditioning and fully-automatic Climatronic climate control are available. Modern technology guarantees desired temperature in the car's interior and the best possible air conditioning whatever the driving and weather conditions. This noticeably improves comfort for passengers on board.



Press Release, Page 34 of 37

The highest standards of comfort are met by the newest generation of electronically-controlled and fully-automatic Climatronic air conditioning. In comparison to the technology used in previous Fabia variants, this new Climatronic is considerably more efficient. The electronic control captures all the important influences and variables such as the intensity of the sun and the external temperature, and automatically adjusts the flow of cool air to suit. Climatronic not only regulates the air temperature but also the intensity and direction of the air flow.

The climatic conditions inside the Fabia are not only analysed by sun and temperature sensors but, for the first time, also by a special humidity sensor located at the base of the rear-view mirror. The ideal humidity level inside the vehicle is always guaranteed, which amongst other things, significantly reduces or even prevents fogging up of windows. Thanks to the humidity sensor, appropriate operation of the air conditioning compressor is possible. The Climatronic will turn off the compressor automatically when needed, thus saving fuel.



ŠKODA





Press Release, Page 36 of 37

Pricing

Fabia 66TSI Manual	\$15,990*
Fabia 81TSI DSG	\$20,290*
Fabia Wagon premium	\$1,150*

* Prices quoted are Manufacturer List Prices excluding dealer delivery charges, which may vary from dealer to dealer and statutory charges, which vary from state to state.

Options

Metallic/Pearl Effect paint	\$500
Panoramic Glass Sunroof	\$1000
Amundsen Satellite Navigation	\$950

Optional packages

Travel Pack (66TSI only)	\$1,300
Sports Pack (81TSI only)	\$1,200
Premium Sports Pack (81TSI only)	\$2,600
Travel Pack with Colour Concept	\$1,600
Sport Pack with Colour Concept	\$1,200
Premium Sports Pack with Colour Concept	\$2,600

For further information:

Karl Gehling, General Manager, Communications
T +61 409 138 069
karl.gehling@volkswagen.com.au

Kurt McGuinness, Public Relations Manager
T +61 413 135 334
kurt.mcguinness@volkswagen.com.au

ŠKODA AUTO

- > is one of the longest-established vehicle production companies in the world. Since 1895, the Czech headquarters in Mladá Boleslav has seen the production firstly of bicycles and then, shortly afterwards motorbikes and cars.
- > currently has seven passenger car models: Citigo, Fabia, Roomster/Praktik, Rapid, Octavia, Yeti and Superb.
- > delivered 1.04 million vehicles to customers worldwide in 2014.
- > has belonged to Volkswagen since 1991. The VW Group is one of the most successful automotive groups in the world. ŠKODA, in association with the Group, independently manufactures and develops vehicles, as well as components, engines and gear transmissions.
- > operates at three locations in the Czech Republic, produces in China, Russia, Slovakia and India mainly through Group partnerships, as well as in Ukraine and Kazakhstan through local partners.
- > employs over 25,800 people globally and is active in more than 100 markets.

ŠKODA

